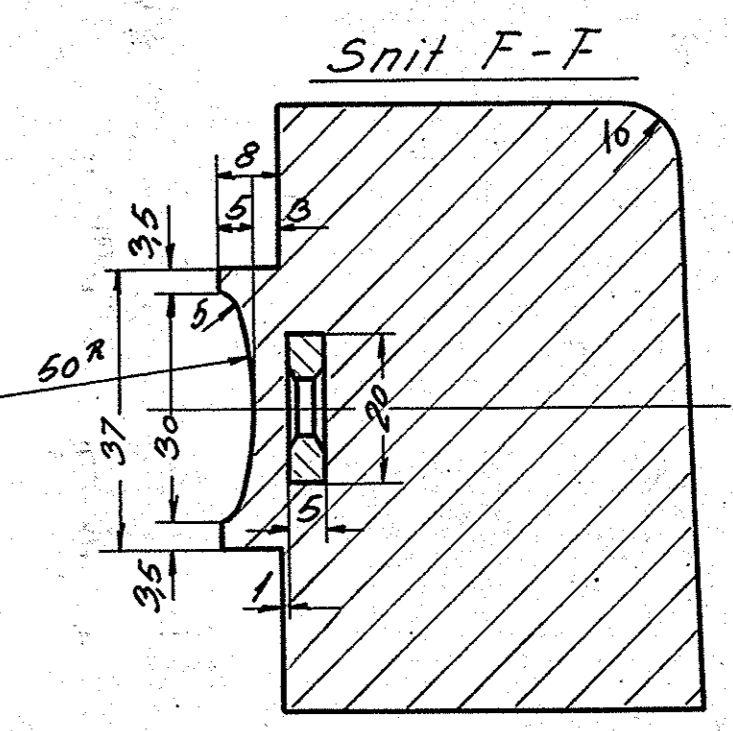
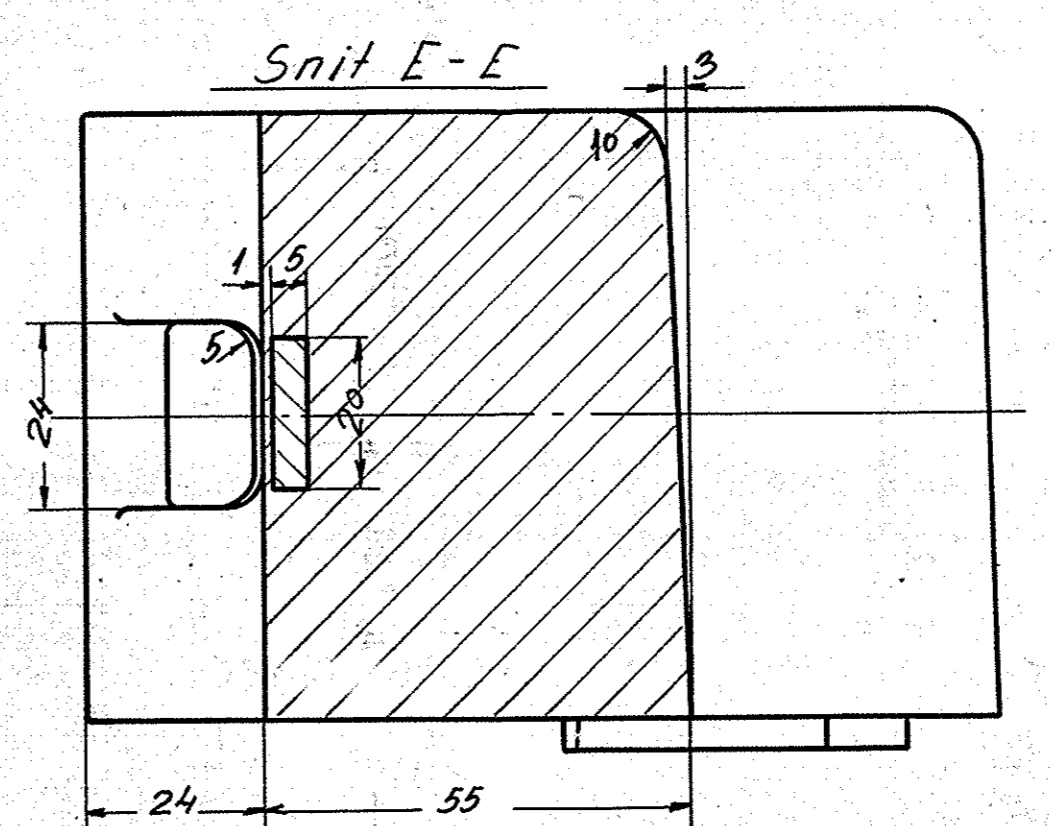
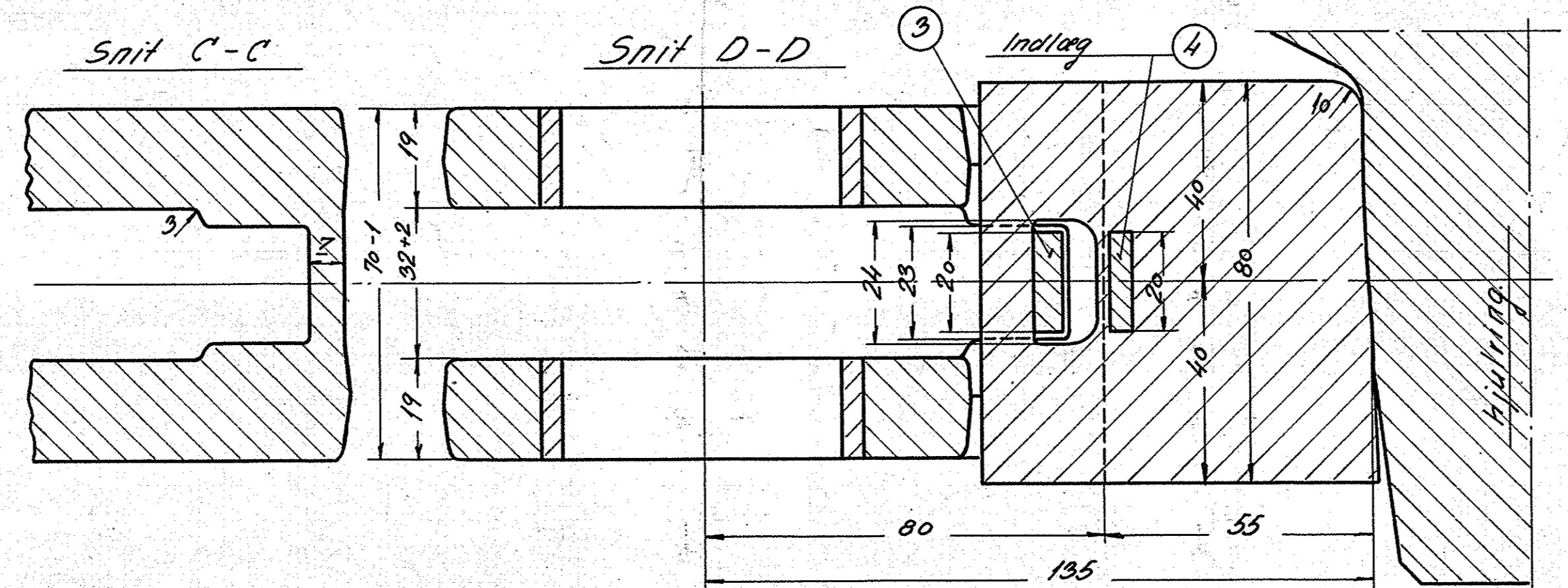
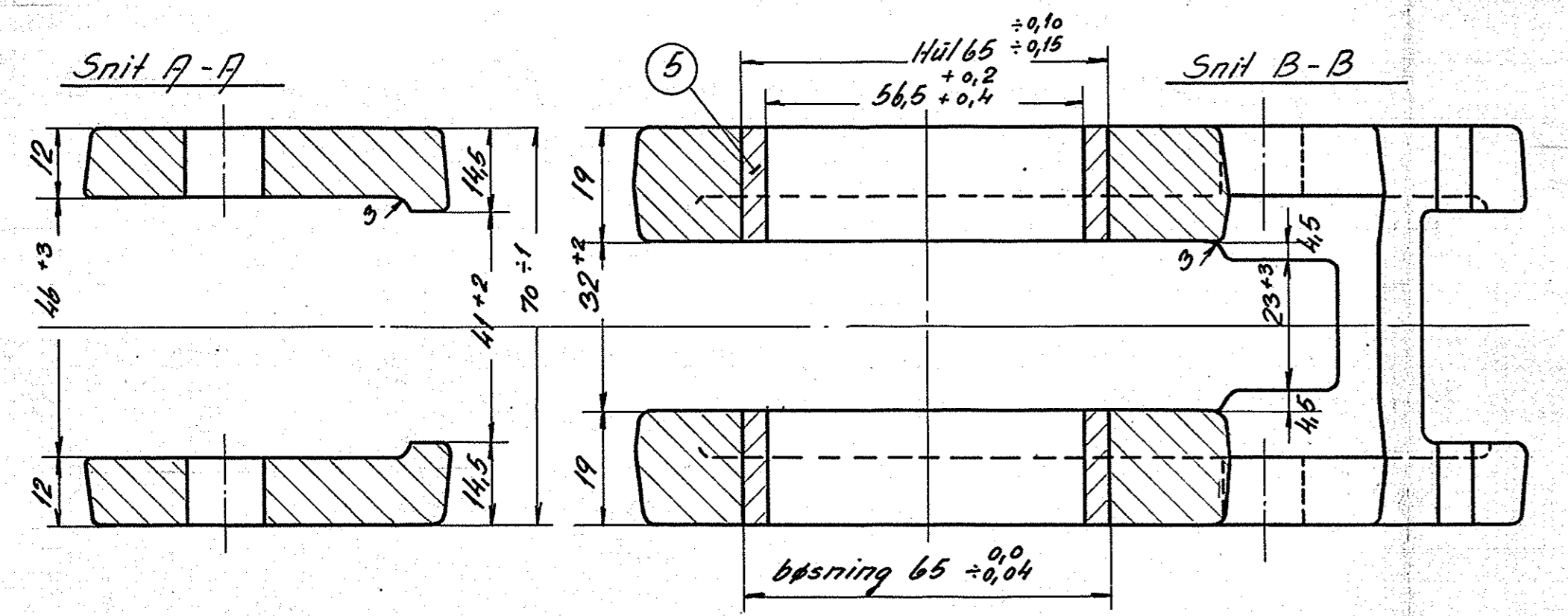
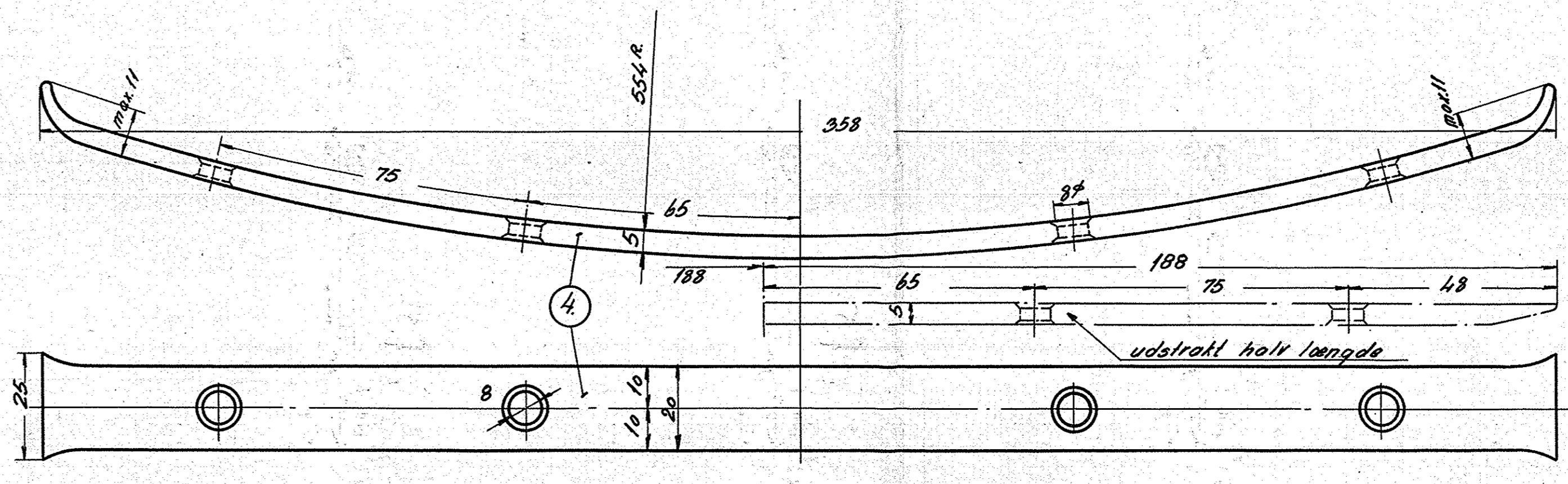
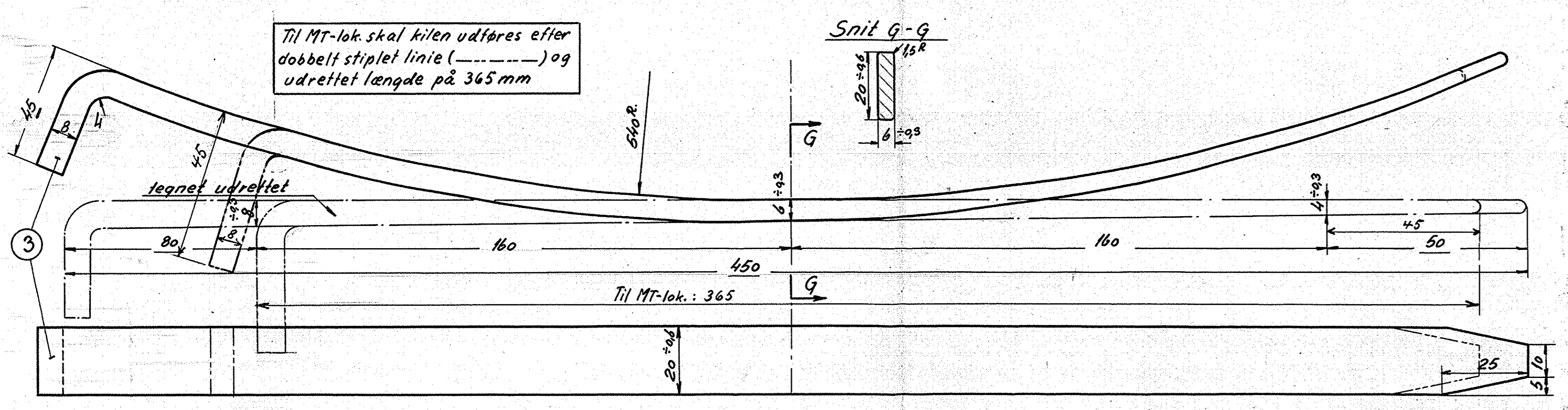


På MT-lok må fjederen kun lige gå nedentor sålen nårhagen hviler på splitten pos. 6



diom af hjul = 998



Kalkuleret efter D.S.B. tegn. NG. 12.956

8	split 13*90	1	st.		
16	bøsning	5	st. 50		0,16
8	indlæg	4	st. 37	magasin	0,30
8	kile foranløst til Dimmelhø. hoveden 38°	2	st. 70,11		0,45
8	bremseklovs søl 4510x	2	st. 60,1		1,20
8	bremseklovs sø	1	st. 37		0,33
skt.	Bolagret Leo	1	st. 1,37		0,33
skt.	Arce	1	st.		
skt.	B.M. 20-0-34	1	st.		
skt.	1952	1	st.		
skt.	Box 3: Løp. 165 for MT-lok på fjern	1	st.		
Målestok: 1:1				FRICHS	
Diesel-el. 400hk. rangerlokomotiv				17905.	
Bremseklovs.				307L-22.124.	